

The onshore wind farm at Overgaard

46 new wind turbines in the northern part of Randers Municipality

Randers Kommune



Program

*By planner Thomas Djernæs
from the Planning Section of Randers Municipality*

- *Welcome*
- *Introduction to the onshore wind farm at Overgaard*
- *Questions.*

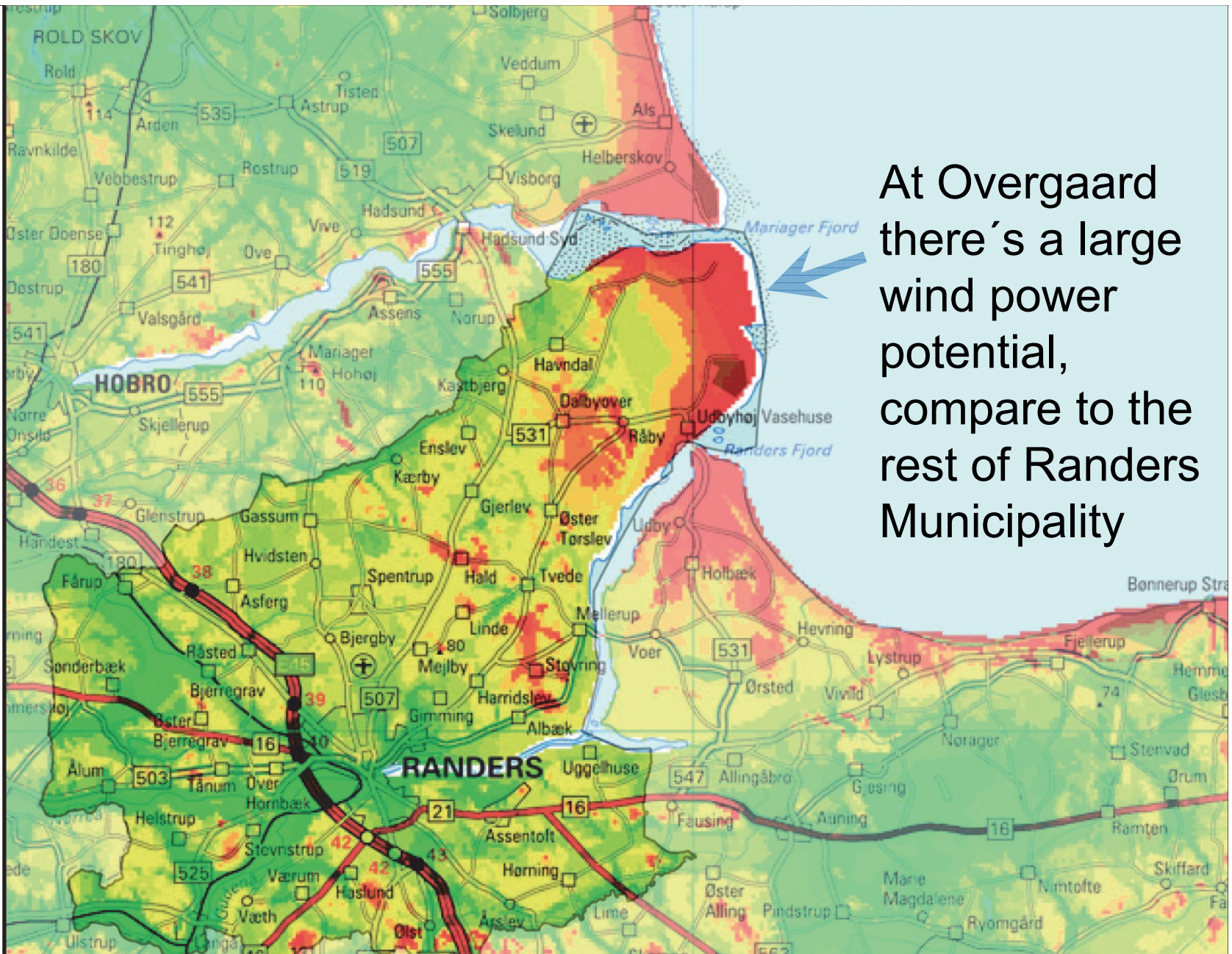
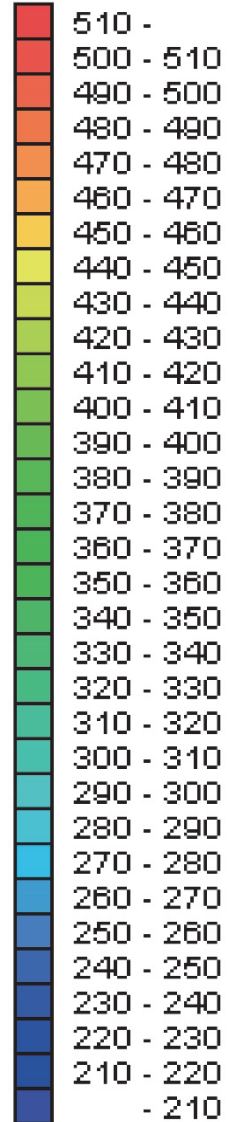


Background

- Randers Municipality is the local planning authority, responsible for the actual areas, to be proposed for the location of coming wind farms.
- The City Council of Randers has the final word about which particular areas in the municipality, that is most appropriate for wind turbines.
- But before a final decision can be made by the City Council, plans for the project has to undergo several stages of public hearings.

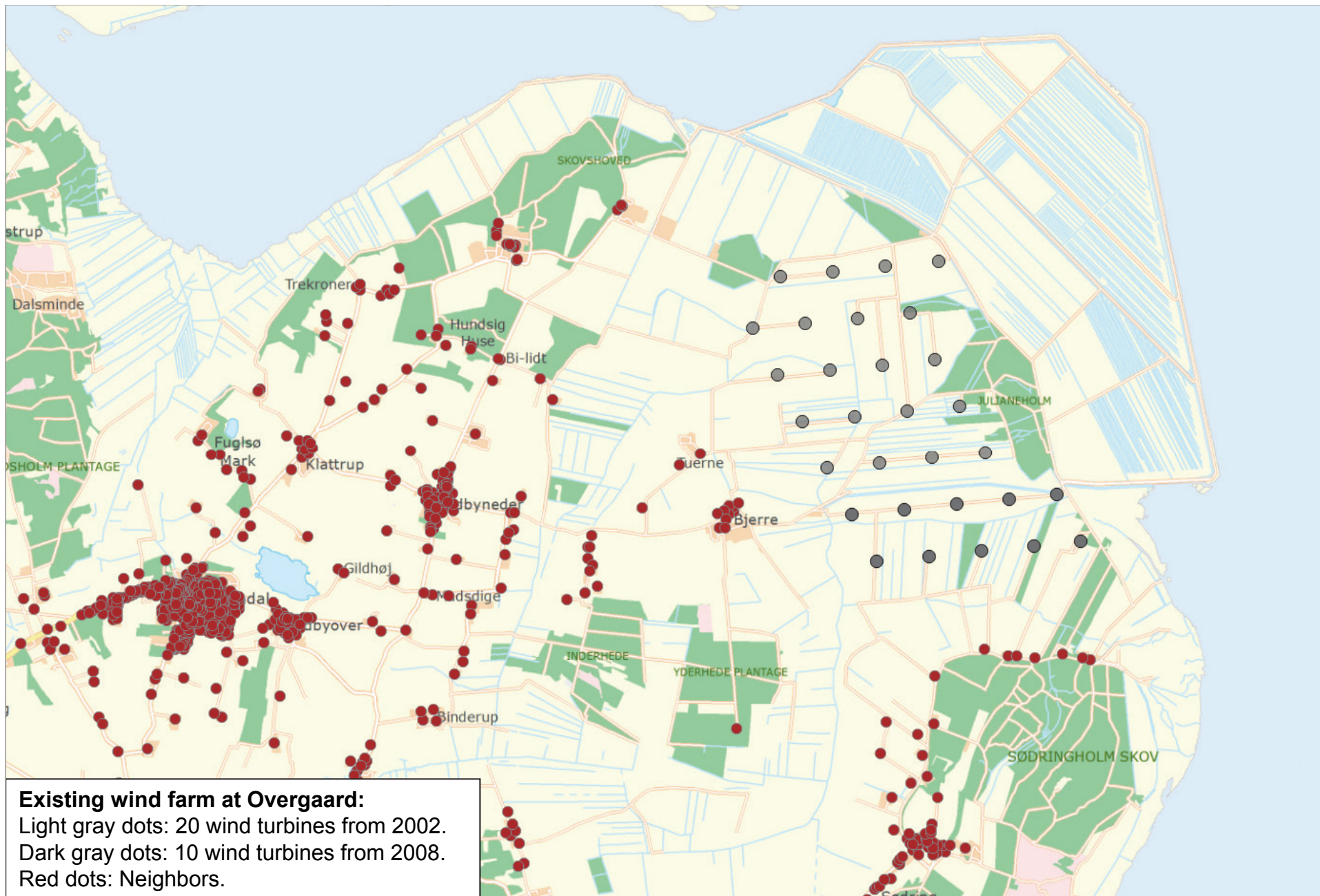


Wind power
 W / m^2



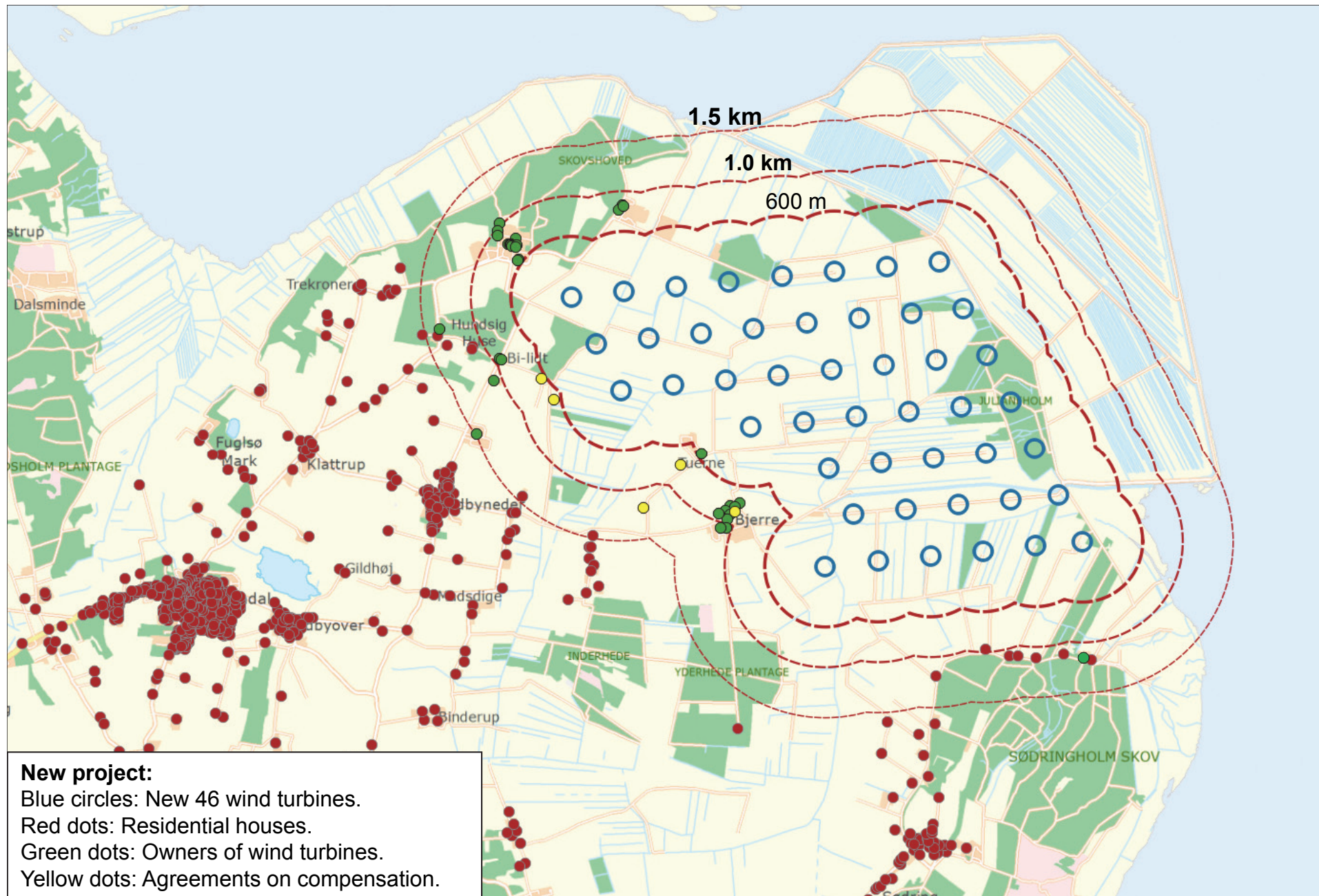
At Overgaard there's a large wind power potential, compare to the rest of Randers Municipality





Introduction to the onshore wind farm at Overgaard, Randers Municipality, 29.01.2019.



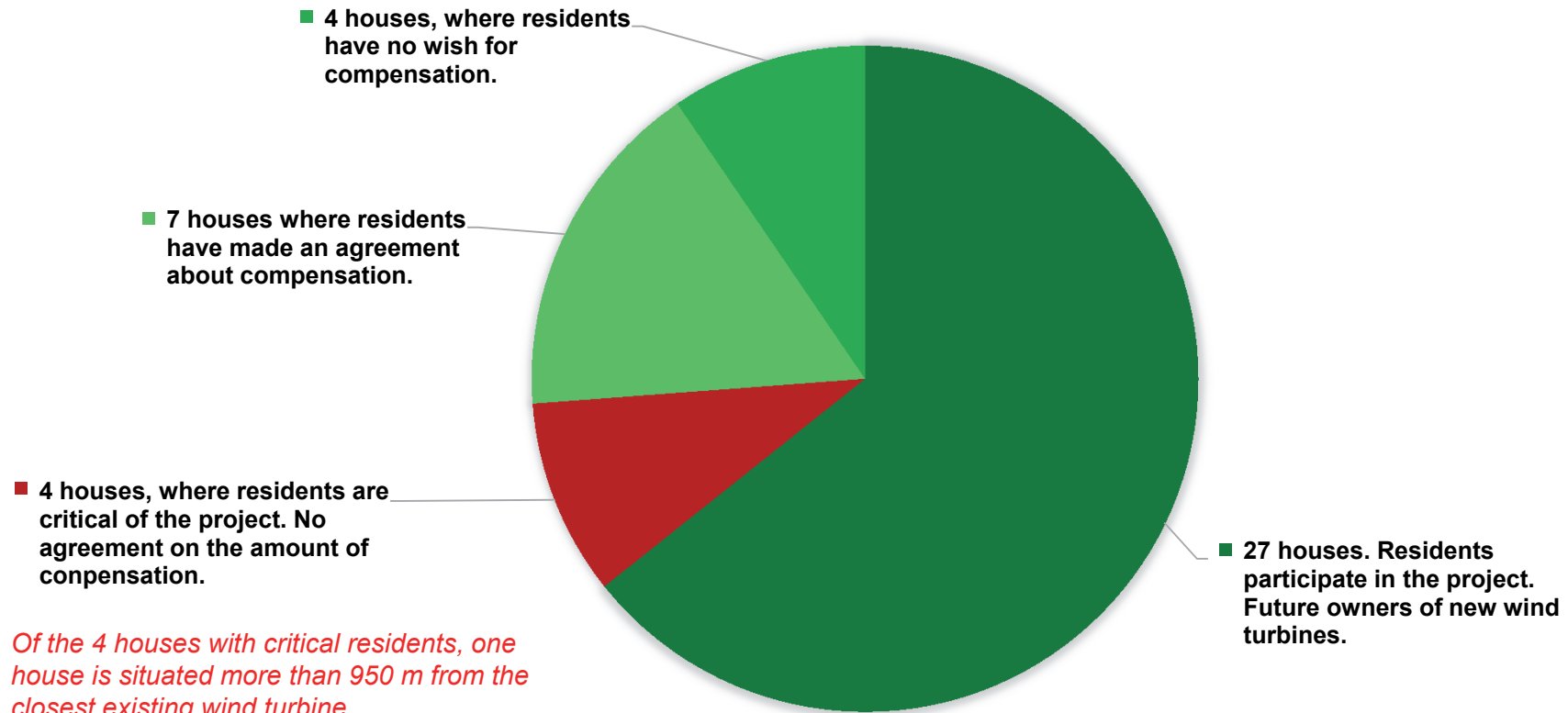


New project:
 Blue circles: New 46 wind turbines.
 Red dots: Residential houses.
 Green dots: Owners of wind turbines.
 Yellow dots: Agreements on compensation.



IN TOTAL 42 RESIDENTIAL HOUSES WITHIN 1.5 KM FROM THE WIND FARM AT OVERGAARD

Residents in 4 out of 42 houses are critical of the project, and can't agree on the amount of compensation offered, by the future owners of wind turbines at Overgaard



*Of the 4 houses with critical residents, one house is situated more than 950 m from the closest existing wind turbine.
The other 3 houses are situated more than 1 km from existing wind turbines.
All 4 houses are situated with unchanged distance to new wind turbines, compared to the existing ones in the area.*



Production on Overgaard wind farm

- **The 46 new wind turbines will be able to produce**
 - ✓ **3.6 times more energy than the 30 existing wind turbines at Overgaard.**
 - ✓ **1.5 times as much as all existing wind turbines in Randers Municipality.**
 - ✓ **510 mio. kWh annually, in at least 20 years to come.**
- **Annual production corresponds to the annual consumption of electricity in 127,500 private households.**



Production on Overgaard wind farm

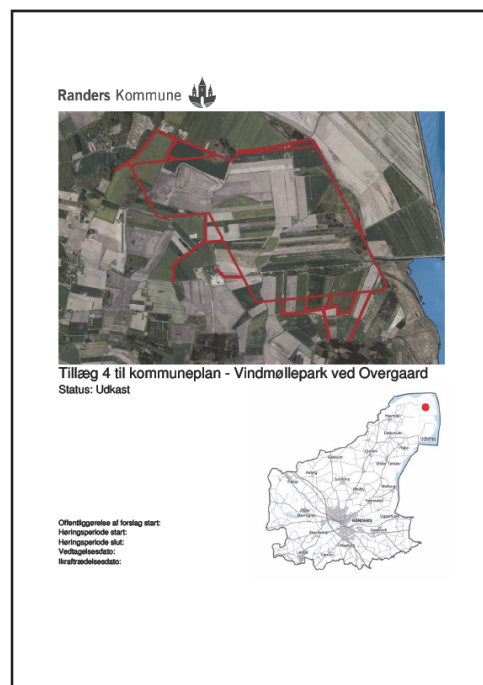
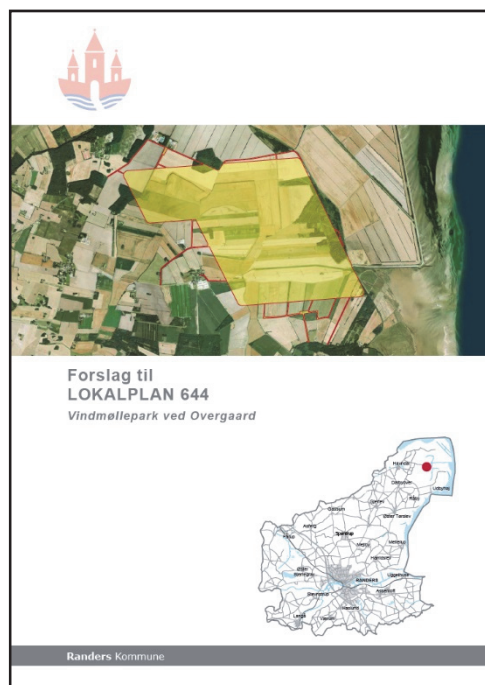
- If the consumption of
 - ✓ factories,
 - ✓ private businesses and
 - ✓ public buildings

are included in the calculation of total electricity consumption, then the 46 new wind turbines at Overgaard will be able to cover 88 % of the needs of electricity in Randers Municipality.



Public hearing, 10 weeks

- The detailed written proposals goes to public hearing.



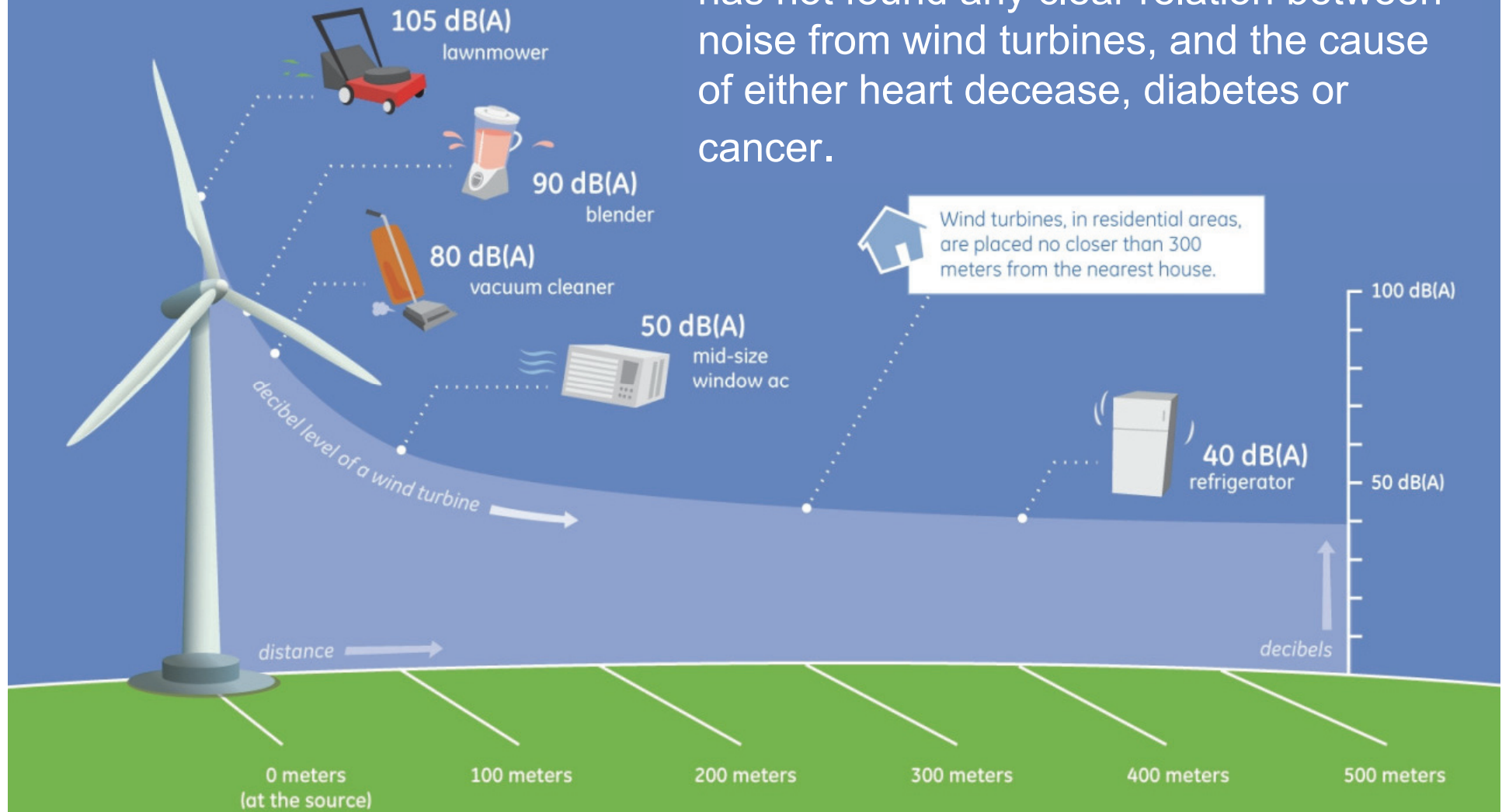
Public hearing, 10 weeks

Main concerns from neighbors are:

- Noise from wind turbines.
- Shadows and reflections from wings.
- Visual disturbance of the coastal landscape.
- Reduced value of real estate in the area.



National investigations into the subject, has not found any clear relation between noise from wind turbines, and the cause of either heart decease, diabetes or cancer.



SOURCE: GE Global Research; National Institute of Deafness and Other Communication Disorders (NIDCD part of NIH)



Further information

- <http://plan.randers.dk/overgaard>
- E-mail: plan@randers.dk

